

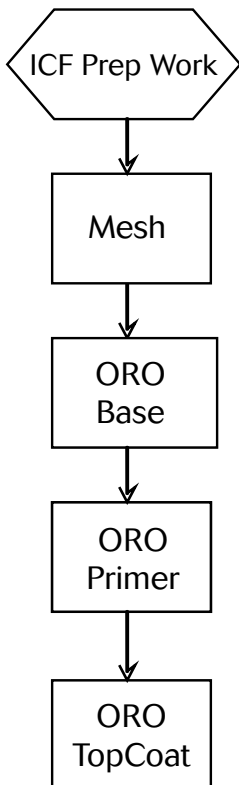
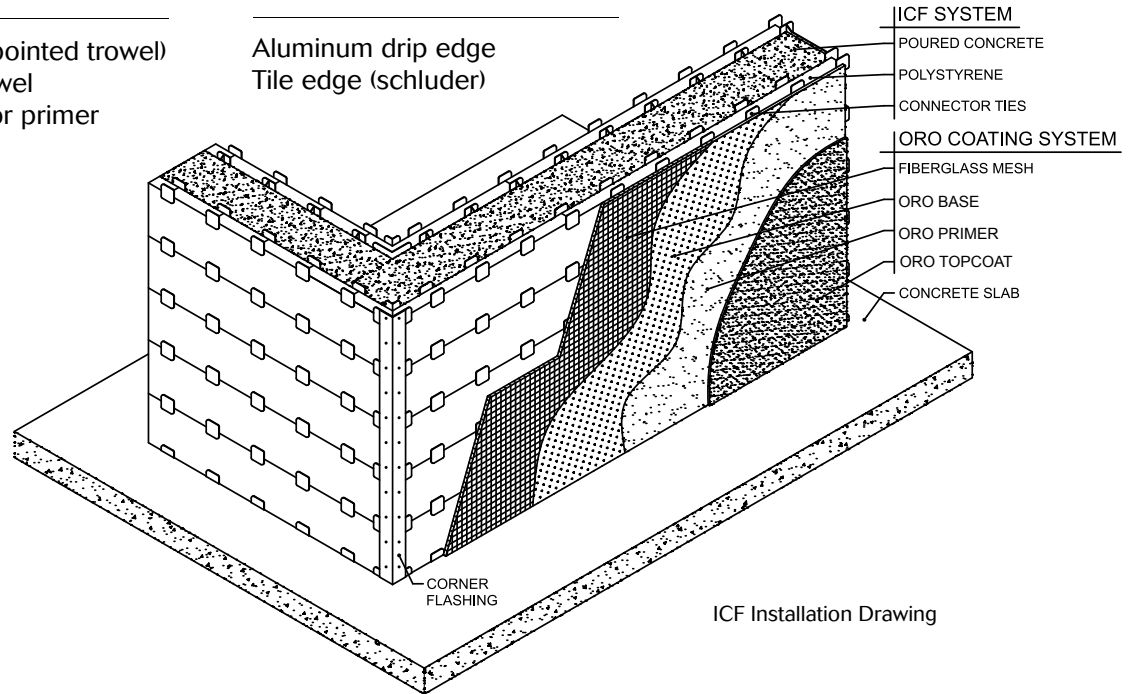
## INSTALLATION INSTRUCTIONS

**TOOLS REQUIRED:**

- Margin trowel (pointed trowel)
- Rectangular trowel
- 2.2 mm roller for primer
- Cutting brush
- Scoop
- Hammer
- Snips

**ACCESSORIES REQUIRED:**

- Aluminum drip edge
- Tile edge (schluder)



Clean the surface. The substrate should be free of all debris, loose granules dust, grease, oil, mildew and mold, and the surface should be dry.

Apply a skim of ORO Base and roll the Fiberglass Mesh onto the entire surface. Ensure a 6 inch overlap around windows, doors and other openings and a 2 inch (min.) overlap at seams.

Apply ORO Base with a trowel over the top of mesh until the mesh is fully embedded in the ORO Base and the surface is smooth.

**Curing time: 24-48 hours (depending on temperature and humidity).**

Ensure that the ORO Base is fully cured before applying the ORO Prime. Tint primer to match the acrylic coat which will be applied over the top. Thoroughly mix the primer and with a brush, paint a full coat around the edges. Apply using a roller in one direction, then roll perpendicular to the earlier direction to ensure full coverage.

**Curing time: 3 - 4 hours (depending on temperature and humidity).**

The ORO Prime should be fully cured, clean and dry. Thoroughly stir the ORO TopCoat, scoop onto the surface and float with a trowel until the surface is smooth.

**Curing time: 24 hours (depending on temperature and humidity).**



## INSTALLATION INSTRUCTIONS

### COMPONENTS:

---

Fiberglass Mesh	1 x 50m roll	475 sq.ft./roll
ORO Base	5 gallon pail	80 sq.ft./pail
ORO Prime	5 gallon pail	500 sq.ft./pail
ORO TopCoat	5 gallon pail	100 sq.ft./pail

### LIMITATIONS:

---

Do not apply over frozen or frosted filled surfaces.

Do not use when ambient temperature will fall below 5 C (41F) overnight.

Do not apply over hot surface exposed to direct sunlight.

Do not apply in the rain. Apply in enough time for product to completely dry prior to rain.

### SAFETY, ENVIRONMENT AND CLEANING:

---

Safety glasses, dust masks are recommended during preparation of the substrate (sanding), gloves may be used during application of the coating system. Avoid breathing vapor or mist. Avoid contact with skin or eyes. Close container after each use. Keep out of reach of children. Do not take internally. Clean with hot water. This product may be disposed of as a non-hazardous material.

### WARRANTY:

---

5 year manufacturer's warranty - See ORO Coatings warranty for complete details.

ORO INTERNATIONAL P.O. Box 13554, Chandler, AZ 85248

Phone: 888.676.2683 | Fax: 888.6762683 | [info@orocoatings.com](mailto:info@orocoatings.com) | [www.orocoatings.com](http://www.orocoatings.com)